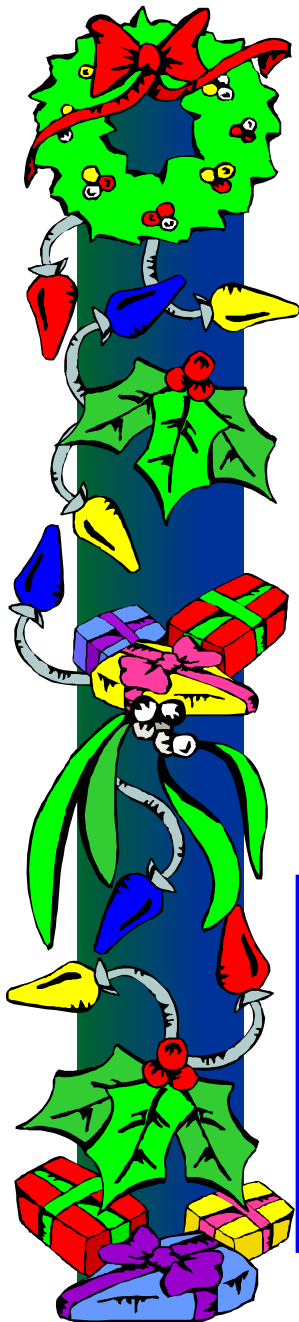




TILLMAN'S CORNER AREA CHAMBER OF COMMERCE

"In Step with Progress"

**Business Network Luncheon-Noon-
Wednesday, January 6, 2010**



*Merry Christmas
and Happy Holidays from
everyone at the
Tillman's Corner Area
Chamber of Commerce*

January Luncheon Guest Speaker

Mr. Travis Osborne is the Environmental Manager at Holcim (USA) Inc. and an active participant in By-Product Synergy Gulf Coast, a local organization that helps businesses find innovative ways to maximize their resources and capitalize on new market opportunities.

Sean's Creative Catering will provide the food for the luncheon.

**Please call the Community Center 666-2488 to make a reservation.
The cost is \$7.00 per person payable at the door.**

Chamber of Commerce

5055 Carol Plantation Road
Mobile, AL 36619

Tel: (251) 666-2846/666-2488

Fax (251) 666-2813

Email:

tillmanscomerco@bellsouth.net

Website:

www.tillmanscomerchamber.com

2010 OFFICERS

Dena Pigg, President

Bill Geers, 1st Vice President

Bob Horinko, 2nd Vice President

Ruth Robinson, Treasurer

Kay Price, Secretary

Doug Freeman, Sergeant-at-Arms

Johnny Antley, Parliamentarian

2010 BOARD OF DIRECTORS

Lois Rockhold

Flo Evans

Lum Anglin

Della Wade

Kim Drinkard

Theresa Orrell

Teresa Taylor

Pamela Millsaps

Tammy Slappey

STAFF

Larry Kent, Director

Randall Prewitt

Pat Johnson

Renewed Members

Doug Freeman

Sherri Walker

Knights of Mobile

Harvard Water

Le Crewe de Bienville

Pritchett Equipment Co.Inc

Holiday Inn

Message from the President Dena Pigg

I am honored to be able to represent my community as President of the Tillman's Corner Area Chamber of Commerce. I am looking forward to a progressive year which I know will reap the rewards of hard work. My vision as President of this chamber is to sustain many of the traditional events of the past, while embracing the new, exciting ventures which await us in the future so that we continue our ever present drive to increase membership and strengthen our community ties. Our goals would not be attainable without the extraordinary efforts already in motion by the newly elected and returning board members. I am blessed to have such a strong, dedicated, and goal oriented group of individuals working with me.

It is my hope that each member will find the time to serve on chamber committees and/or to help organize programs and events throughout the upcoming year. I am appreciative of all our members who have supported programs and whose commitment helped insure the success of our past events.

As plans begin to emerge for all of the various committees, programs, and services for 2010, there is excitement building about the many ways the Chamber can benefit and serve you. In the upcoming year, if you want to get out and meet other business persons, visit a business luncheon, make new friends, or simply learn more about the Chamber of Commerce, we welcome you to do so. As current members, we need to continually motivate our fellow businesses to get involved with the local chamber.

The Chamber's first event of 2010, our monthly business Luncheon, is January 6, 2010. I look forward to seeing you there. Our speaker Mr. Travis Osborne with Holcim, Inc will talk about his local business and their involvement with the environment. He will be on hand for questions as well. Please mark your calendars to attend this very important business luncheon.

I would like to congratulate our Citizen of the Year, Christine Whiteley. Christine is the sister of a former Citizen of the Year winner, Theresa Orrell. We are proud to have Ms. Whiteley as our Citizen this year. Plans are in the works for a banquet in her honor. Details will be available soon.

A special thanks to our 2009 President Mrs. Lois Rockhold. Her guidance and leadership for the past two years has been incredible. Lois has been an indelible asset to our Chamber. Although we will miss her as our president, we will continue to solicit her support.

Thank you all for supporting the Tillman's Corner Area Chamber of Commerce.

Merry Christmas. Here's to an exciting and prosperous New Year!



Dena



Chamber Website
www.tillmanscornerchamber.com

Official Publication of the Tillman's Corner Chamber

"IN STEP WITH PROGRESS"

Reminders

- ü Board Meeting, Monday, January 4
5:30 PM Community Center
- ü Business Networking Luncheon
January 6 - 12:00 Noon
Community Center

Contact Information

Phone: 251-666 - 2846

Phone: 251-666 - 2488

Fax; 251-666 - 2813

Email: tillmanscornerco@bellsouth.net

Tillman's Corner Area Chamber of Commerce
5055 Carol Plantation Road
Mobile, AL 36619



Business Spotlight of the Month



Polysurveying, Inc. and Mobile Polyengineering, Inc. has been providing surveying and engineering services to the gulf coast for over 30 years. Due to our continued dedication to our clientele and our experience serving on the gulf coast, we have been able to establish our firm as one of the leaders in our industry.

Polysurveying and Mobile Polyengineering provides widely diversified engineering and surveying services.

All permanent staff members employed here consist of Professional Engineers, Professional Land Surveyors.

Polysurveying and Mobile Polyengineering, Inc. is dedicated to serving our clients by providing economical, timely and professional surveying and engineering services.

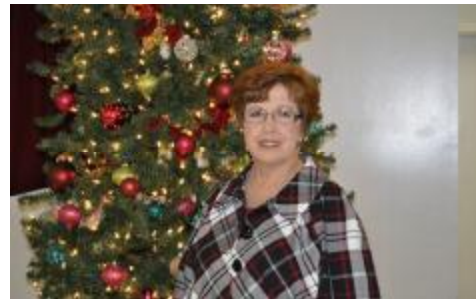
5588 Jackson Road
 Mobile, AL 36619
 251-666-2010
www.polysurveying.com

2010 Board of Directors



Front Row: Kim Drinkard, Flo Evans, Tammy Smiley, Ruth Robinson, Lois Rockhold.
 Back Row: Doug Freeman, Bob Horinko, Teresa Taylor, Teresa Orrell, Dena Pigg, Pam Millsaps, Della Wade, Lum Anglin

2010 Citizen of the Year



Congratulations to our Citizen of the Year, Christine Whiteley. Plans are in the works for a banquet in her honor. Details will be available soon



Dave Reaney accepts a contribution to the Bay Area Food Bank from Lois Rockhold of the Tillman's Corner Chamber of Commerce.

New Member



Dena Pigg welcomes new member Kevin Irle representing Waddell and Reed Financial Planners



Breakfast with Santa and the Christmas Parade was a great success. Go to the chamber website www.tillmanscornerchamber.com to view the pictures from the day.