



TILMAN'S CORNER AREA CHAMBER OF COMMERCE

"In Step with Progress"

Email: tillmanscornerco@bellsouth.net

BUSINESS NETWORK LUNCHEON—February 7, 2007

Hosted by the Tillman's Corner Area Chamber of Commerce

A Look Inside

Business Luncheon	Cover
John Tyson, Jr.	Cover
President's View	2
2007 Officers & Board	2
In Step With Progress	2
Business Spotlight	3
Lum Anglin, Citizen of the Year	4
Citizen of the Year Banquet Pictures	5
A Blast from the Past Coach Douglas	6
American Cancer Award Theresa Orrell	6
Mardi Gras History	6
Inauguration Parade	7
Reminders	Back

Like the community it serves and represents the Tillman's Corner Area Chamber of Commerce is...

"In Step With Progress"

Mark your calendar to attend the Chamber's **Business Network** luncheon **Wednesday, February 7, 2007** at the Tillman's Corner Community Center 5055 Carol Plantation Road beginning at 12:00 noon.



Our guest speaker is **Mobile County District Attorney John Tyson, Jr.** He is responsible for more than 25,000 felony convictions. When he became district attorney for Mobile County 12 years ago,

he decided it took too long to complete criminal cases so he used technology and modern management techniques to cut the time in half. When he encountered elderly crime victims who couldn't afford to repair their damaged homes, he organized volunteers to provide repairs and recovery help. When violence at schools became a problem, he taught teachers how to use our laws to maintain discipline and backed them up by intervening when teachers believed discipline problem might lead to violence.

Preventing Crime Before It Happens:

22,329 families helped with school truancy problems

- 4,000** public school teachers helped with maintaining school discipline
- 65,000** young people taught the dangers of juvenile crime
- 626** families helped with family, health, school problems
- 18** newborns in Alabama saved from death through abandonment
- 3,976** students with school discipline problems helped
- 161,135** crime victims helped

In order to have adequate seating and food preparation you must register by **Monday, February 5th**. Please call the Community Center 666-2488 with your reservations. The cost is \$6.00 per person payable at the door or you can drop your check off at the Community Center payable to TCACC.

A special menu will be catered by **Dick Russell's Bar-B-Q** located at 5360 Highway 90.



(334) 661-6090
FAX 661-6131

Dick Russell's
FAMOUS BAR-B-Q

Steak • Seafood • Bar-B-Q
Breakfast • Lunch Specials

5360 Hwy 90 West
Tillman's Corner
Mobile, Alabama 36619

J. M. Popple Russell
President

The presidents view



This month I had planned on addressing the upcoming events of the Chamber. Changing my mind is quite common and so I changed my mind.

I wanted to take this opportunity to tell you about someone I think is deserving of praise. This person very seldom acknowledges the things she does and so I wish to do so now. She will hopefully print my letter as she is the publisher of the Chamber's monthly newsletter. Kay Price I salute you for all of your accomplishments and certainly that you share your time with this Chamber. You have stepped in to serve when others would not. Thank you for doing so and thank you for being my friend.

Flo Evans, President

"Continuous effort—not strength or intelligence—is the key to unlocking our potential." — Liane Cardes

Chamber of Commerce

**5055 Carol Plantation Road
Mobile, AL 36619**

Tel: (251) 666-2846/666-2488

Fax (251) 666-2813

Email: tillmanscornerco@bellsouth.net

2007 OFFICERS

Flo Evans, President

Lois Rockhold, First Vice President

Rory Winkler, 2nd Vice President

Bill Geers, Treasurer

Kay Price, Secretary

Johnny Antley, Sergeant-at-Arms

Doug Freeman, Parliamentarian

2007 BOARD OF DIRECTORS

Lum Anglin

Karen Genard

Ken Hart

STAFF

Larry Kent, Director

Randall Prewitt

Pat Johnson

The motto of the Tillman's Corner Area Chamber of Commerce "***In Step With Progress***" tells just a part of the story of the Chamber and their industrious members. The strength of their members, directors and dedicated officers is a vital role representing the interest of the community, the citizens, and the promotion of economic development of South Mobile County. This rich tradition is a tremendous source that will ensure a Chamber that works together, instill and encourage a strong economic foundation for South Mobile County.

The Tillman's Corner area is undergoing enormous growth and over the past two decades, the community within South Mobile has experienced a tremendous increase in population as well as industry. This increase has caused unprecedented change in the geographical face of the entire region.

Our economy is on the rise! The many changing life styles within our community reflects the image of a modern metropolis marching forward to the resounding beat of progress lead by the Citizens of Tillman's Corner with the utmost pride, ambition, and optimism.

Like the community it serves and represents the Tillman's Corner Area Chamber of Commerce is...

"In Step With Progress"

Business Spotlight of the Month



Heritage Planning Group, P.C.

Providing Access to Expertise in Retirement, Tax, Asset & Estate Strategies

WILLIAM F. GEERS

Financial Services Representative



Bill Geers has been a servant of the Mobile community since 1987. He holds two Bachelor of Science Degrees in Physics and Geology with minors in Economics and Finance. Bill serve as a Coast Guard Rescue Pilot completing 24 years before retiring because of a medical disability. During his military career, Bill was a financial advisor for the men and women he served with as well as a comptroller for several of his duty stations. After retiring from the military, he became a licensed financial consultant working for five years for a major brokerage firm. Bill believes strongly that a individual financial plan should be the basis for all financial decisions. His goal is to continue to provide investment counseling tailored to the individual client's total needs. Bill joined the team Heritage Planning Group, P.C. in order to offer his clients the benefits of comprehensive services with access to a network of professionals in the areas of investment, tax, retirement and estate management. Bill is highly experienced in working with small businesses in the Mobile area in retirement planning.

He is currently on the Board of Directors of the Home Builders Association of Mobile, Alabama and the President of the Remodelers' Council of Mobile Home Builders Association. He is also a member of the Tillman's Corner Board of Directors and is the Treasurer for the Tillman's Corner Chamber of Commerce.

NASD Registrations: Series 7 (General Securities Representative) & Series 66 (Uniform Combined State Law Examination)

Recognized nationally for fast paced client services by MLPFS in 2000

Experienced in helping small business develop strong financial strategies

Public Speaker for various groups and not-for-profit organizations

Member of the Mobile Council Navy League

P. O. Drawer 2670
27180 Pollard Road
Daphne, AL 36526

251-621-2302
800-494-8440
Fax: 251-621-2305

William F. Geers is a Registered Representative of and offers securities products, investment advisory and financial planning services through MML Investors Services, Inc., Supervisory Office: 1635 Lelia Drive, Suite 100, Jackson, MS 39216 (601) 981-4545. Insurance offered through Massachusetts Mutual Life Insurance Company and other fine companies.

Lum Anglin, Citizen of the Year Honored Thursday, January 11, 2007



Pictured with Lum is his lovely wife Jeanette and their family.

The Citizen of the Year award is presented by the Tillman's Corner Area Chamber of Commerce each year to acknowledge the on going efforts of a non-business or business person who has shown exceptional dedication to the improvement of our community and its people. Their generous contribution of time, energy and services given toward the promotion and growth of a better community is what has become known as the Citizen of the Year Award.

Lumon Alton Anglin better know as "Lum" exemplifies this award and was honored with a banquet Thursday, January 11, 2007 by the Tillman's Corner Chamber with over 130 people in attendance.

Lum received many plaques, gift certificates and praise for his continuous contributions to others.

Faith is not simply a patience which passively suffers until the storm is past. Rather, it is a spirit which bears things with resignation, yes, but above all with blazing, serene hope.

Corzaon Aquino



Lum is pictured with his lodge brothers who presented him with a lifetime membership and gift certificate on behalf of the Howard Lodge #69.



Dr. Randy Johnson with Cypress Shores Baptist Church presented Lum with a beautiful engraved plaque and gave words of praise for Lum's dedication to God, his church, community and his continuous contributions to others.

Lum Anglin Receives NUMEROUS accolades



Flo Evans, President of the Tillman's Corner Chamber



Mobile County Sheriff's Department Chief Deputy Trey Oliver



Lum received a resolution from Mayor Sam Jones and words of praise from Judge Don Davis



Mobile County Commissioner Mike Dean presented Lum a County resolution.



Judge Rick Stout



Judge Herman Thomas



On behalf of the American Cancer Society, Theresa and Matt Orrell present Lum with a certificate of appreciation.



Billy Bolton, The Alabama Pecan Festival



Richard, Roy and Kay Price present an Alabama gift. In addition, Kay Price presented on behalf of the American Business Women's Association

N2Deep Barber-shop Quartet entertained at the Citizen of the Year Banquet with a mixture of vocal excellence.



Many thanks to "All A Bloom Florist" for donating the center pieces and flowers for the Citizen of the Year banquet.



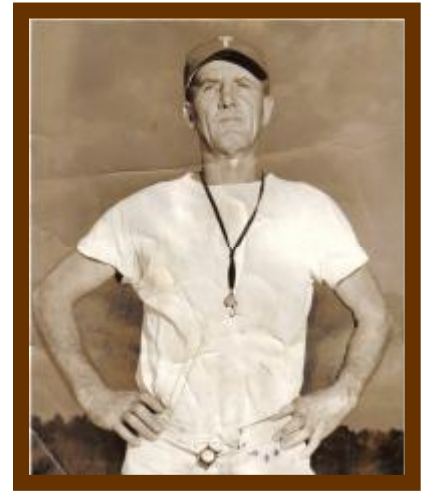
Katherine Hankins recently celebrated her 90th Birthday and attended Lum's banquet...did you know Ms. Hankins was Lum's teacher in school!

A blast from the past

The Tillman's Corner Area Chamber of Commerce is proud to support their community to include Theodore High School's on going activities and events. THS was founded in 1920 and moved to its new location and building in 1984, 6201 Swedetown Road Theodore, AL.

We came across an old picture taken in the 50's and wanted to share with you. Pictured at the right is Coach Douglas who was honored by having Theodore High School's football field named after him.

If you have a story and a picture to share from the "Past" of the Tillman's Corner/Theodore community, please drop off at the Tillman's Corner Community Center, attention Kay Price.



Congratulations Theresa Orrell who was named "Community Volunteer of the 2005-2006 Year for the American Cancer Society. Theresa has been involved in the Southwest American Cancer Society's Relay for Life for the past 7 years of which she has served as Chairperson for the past six years. In addition, Theresa represented Mobile's American Cancer Society as their Ambassador in Washington for the "Celebration on the Hill" this past year where 10,000 people attended. The 2007 Southwest Relay for Life will be held at Theodore High School's football field Friday, May 11th. If you are interested in making a donation, serving on a committee, participate in the Relay for Life, or attend as a Survivor, please contact Sarah Hunt Oswald for additional information at the American Cancer office 251-414-1305.



History

Mardi Gras is just around the corner with parades in downtown Mobile, Dauphin Island, Coden, and Tillman's Corner. A little history...Mardi Gras is celebrated in Mobile, New Orleans and other Gulf Coast cities. This festive event was started in Mobile and according to some accounts, dates back to 1703. The celebration was originally called Boef Gras (Fat Beef).

The well-known Mardi Gras in Mobile was begun by Michael Krafft. On New Year's Eve, 1830, Krafft and his friends were reluctant to end a dinner party at the customary time. They raided a nearby hardware store, took up rakes, hoes and cowbells and proceeded to wake the town. They soon formed the Cowbellion de Rakin Society, the first of Mobile's many modern mystic organizations. The Cowbellions presented their first parade, complete with floats and theme, in 1840.

The Civil War brought revelry in Mobile to an abrupt halt. Joseph Stillwell Cain, on Fat Tuesday of 1866, donned full Chickasaw Indian regalia, dubbed himself Chief Slacabamorinico. Cain and six friends set out to raise the morale of citizens in the defeated city. Dubbing themselves the "Tea Drinkers", and fired up by drink much stronger than tea, they took to the streets in a decorated coal wagon pulled by a mule. Cain was a founder in the Order of Myths, the organization which today holds the final Carnival Season parade Mardi Gras night. He also helped organize many more parading societies. Cain's role in reviving Mardi Gras is observed each year on the Sunday before Mardi Gras Day, "Joe Cain Day." On "Joe Cain Day" thousands of Mobilians in costume and on individually designed floats paraded through the streets of downtown Mobile.

The date of Mardi Gras is determined by the date of Easter. Mardi Gras Day, or "Fat Tuesday," is the Tuesday before the Ash Wednesday which begins the 40 days Lenten season. Nighttime parades and other public festivities begin about 10 days before Mardi Gras Day. Carnival Season balls, receptions and other private functions begin in the fall and continue through Mardi Gras Day.

Chamber participates in Inauguration Parade

The Tillman's Corner Area Chamber of Commerce participated in Governor Riley's Inauguration Parade "Country Style" with beautiful horse draw carriages. Chamber President Flo Evans and Vice President Lois Rockhold rode in the Inauguration Parade Monday, January 15, 2007 with the Alabama Pecan Festival Queen Jodie Giles, Miss Theodore High School Britini Thompson and Miss Theodore High School Haley Horton.



Governor Bob Riley is sworn in by his son Rob Riley while surrounded by his family Monday at his inauguration ceremony at the state Capitol in Montgomery. — Montgomery Advertiser



Pictured left to right are Lois Rockhold, Miss Theodore High School Britini Thompson, Flo Evans, Miss Theodore High School Haley Horton and Billy Bolton.



Agricultural & Industries Commissioner Ron Sparks is pictured with Lois Rockhold and Flo Evans.



Lt. Governor Jim Folsom, Jr. is pictured with Lois Rockhold, Flo Evans, Alabama Pecan Festival Queen Jodie Giles and Billy Bolton.



tillmanscornerco@bellsouth.net

Official Publication of the Tillman's Corner Chamber

"IN STEP WITH PROGRESS"



Reminders

- Monday, February 5th 5:30 p.m.
Chamber Board Meeting
- Wednesday, February 7th 12:00
Noon Business Network Luncheon

Contact Information:

Phone: (251) 666-2846

Phone: (251) 666-2488

Fax: (251) 666-2813

Email: tillmanscornerco@bellsouth.net

Tillman's Corner Area Chamber of Commerce
5055 Carol Plantation Road
Mobile, AL 36619

